

SYMMETRY SERIES

ELECTRIC FIREPLACES

Amantii



SYM-50 XT shown with Glass Chunks

SYMMETRY XTRASLIM SMART

The Symmetry Xtra Slim Smart electric fireplace offers the perfect blend of style and functionality to any room it's placed in. Defined by its slender depth proportions and streamlined integration into any contemporary domain, the Symmetry Xtra Slim Smart is a both a familiar emblem of welcome and conversation.

A elegant flame display dances across the back of the fireplace, creating movement that is sure to catch your eye. The heat settings can be adjusted with a simple push of a button. During the warmer months, you can set the flames to display without heat – making it perfect to use all year long.

KEY FEATURES

- 5 Year Warranty
- Fire & Sound – Two (2) quality audio speakers deliver a fire crackling sound. The audio is an ON/OFF feature that can be controlled through the WiFi app
- WiFi compatible to connect and control the fireplace from your smartphone with the use of our app. Available on the Google Play Store and the Apple App Store
- Bluetooth Connectivity – Featuring a fireplace with high quality audio from Bluetooth speakers. Simply pair your phone with the fireplace and press play on your smartphone 🎧
- Programmable timer & thermostat allows you to decide the temperature of the room. Set the fireplace to turn on before you arrive home or have it automatically turn on when the weather is cold.
- Smart Room Temperature Control - 59°F - 82°F or 15°C - 28°
- 1465W – 5000 BTU, heats up to 500 Sq. Ft.
- 50000 hours lifetime LED light source
- Approved for Outdoor Installations*
- Designed with front flow heating and hidden venting so that the unit can be recessed or semi flush mounted
- A clear reduced trim kit allows for a large viewing area with true lifelike flames that can not be rivaled
- Adjustable flame brightness and speed that can be turned on separately.
- Adjustable ember bed colors that allow for the possibility of auto mixing thousand of colors
- Most quiet and reliable components in the industry
- Patented thermostatic remote comes included
- Masonary finish to trim option

IDEAL APPLICATIONS

- Apartments
- Condos
- Townhouses
- Older homes

TECHNICAL SPECS

Volts	120
Amps	12.5 A
Watts	1465 max
Heater On	1465 watts high, 732 watts low
Heater Off	33 watts Max
Rotor Motor	1 at 2.9 watts
BTU	5000 Max

INCLUDED ACCESSORIES



OPTIONAL LOG SET

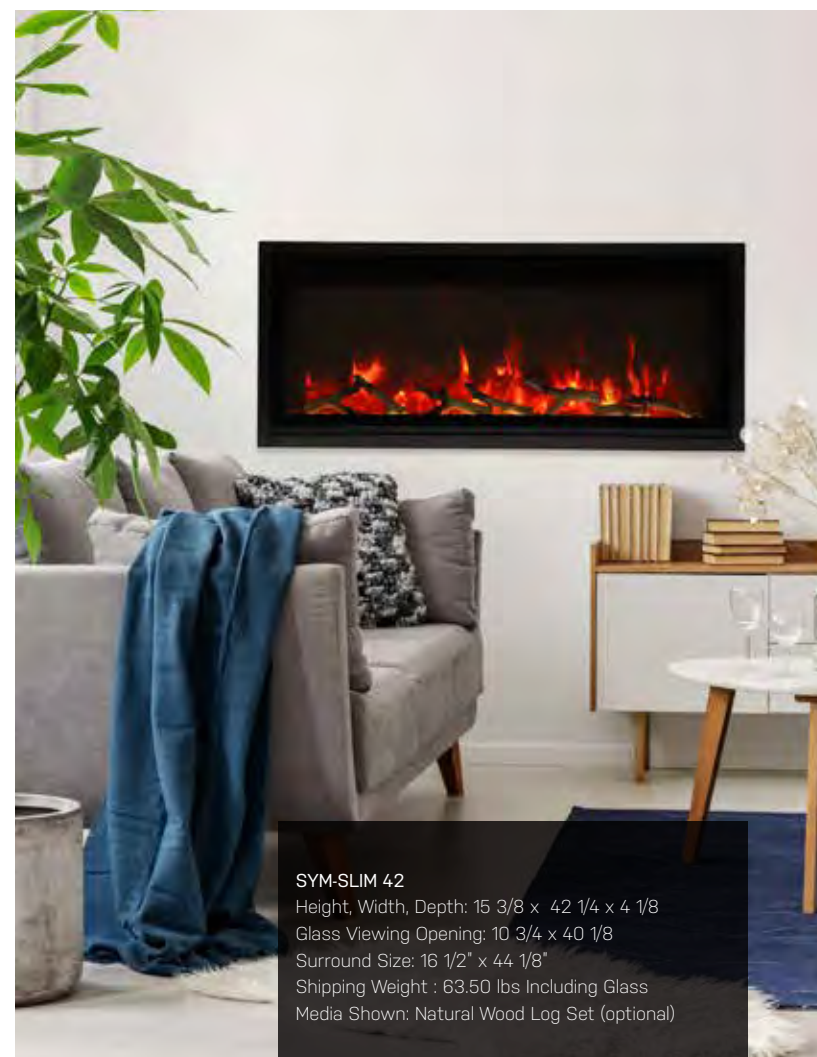
8-PC NATURAL WOOD LOG SET



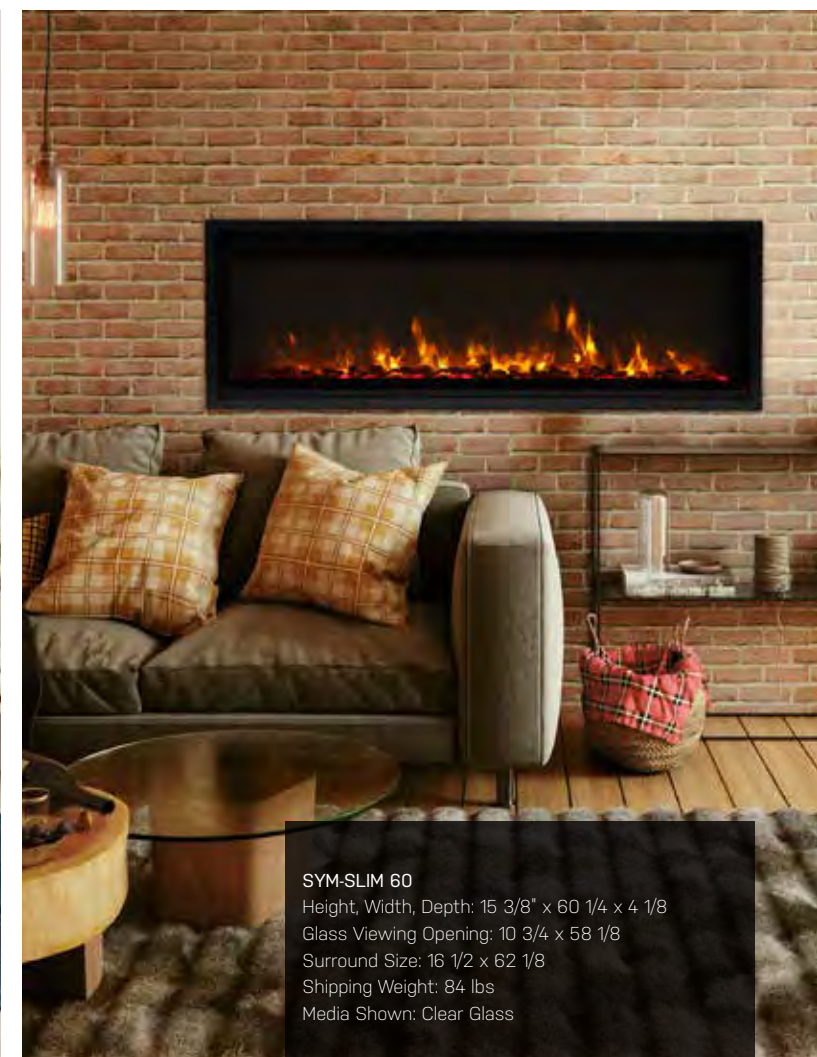
**Manufacturer guidelines regarding outdoor installation must be followed. Please refer to the owner's manual for additional information*



SYM-SLIM 50
Height, Width, Depth: 15 3/8 x 50 1/4 x 4 1/8
Glass Viewing Opening: 10 3/4 x 48 1/8
Surround Size: 16 1/2 x 52 1/8
Shipping Weight : 71.50 lbs
Media Shown: Ember Glass AMSF 11 (optional)



SYM-SLIM 42
Height, Width, Depth: 15 3/8 x 42 1/4 x 4 1/8
Glass Viewing Opening: 10 3/4 x 40 1/8
Surround Size: 16 1/2 x 44 1/8
Shipping Weight : 63.50 lbs Including Glass
Media Shown: Natural Wood Log Set (optional)



SYM-SLIM 60
Height, Width, Depth: 15 3/8 x 60 1/4 x 4 1/8
Glass Viewing Opening: 10 3/4 x 58 1/8
Surround Size: 16 1/2 x 62 1/8
Shipping Weight: 84 lbs
Media Shown: Clear Glass

SYMMETRY SMART

Symmetry Smart is among the most versatile fireplaces that we offer. This series comes in six sizes to choose from and only requires electrical power. Our WiFi enabled Symmetry Smart fireplace provides more control options, with vivid flames in three colors, a three speed motor and a new remote control. It's slim design allows for applications inside or outside, including semi flush mounted within a 2 x 4 wall and standardized sizing allows for hassle free installation at any stage of your project. Birch logs and crystal gems already come included, further enhancing the beautiful flame presentation. Symmetry Smart provides stylish and efficient heating for any room up to 500 square feet.

KEY FEATURES

- Can be fully recessed or Semi Flush Mounted within a 2 x 4 wall.
- SYM-XS surround required for semi flush mount applications
- WiFi compatible to connect and control the fireplace from your smartphone with the use of our app. Available on the Google Play Store and the Apple App Store
- Three flame speed motor
- Choose from combinations of yellow, orange, and red colored flames
- Two flame pattern styles – standard and more traditional
- Flame operates with or without heat
- Choose from 11 colors of canopy and ember bed lighting to illuminate decorative media from below and above
- Touch pad for convenient control of features and temperature display on the fireplace
- Programmable timer & thermostat allows you to decide the temperature of the room. Set your fireplace to turn on before you arrive home or have it automatically turn on when the weather is cold
- Patented thermostatic remote comes included

IDEAL APPLICATIONS

- Residential spaces
- Commercial spaces
- Restaurants
- New construction or renovations
- Outdoor use; refer to installation manual

TECHNICAL SPECS

Volts	120
Amps	13
Watts	1465 max
Heater On	1465 watts high, 732 watts low
Heater Off	60 watts Max
Rotor Motor	1 at 2.9 watts
BTU	5000 Max

Hidden venting and no grills. The heater is located at the top of the unit allowing heat to cascade down in front of the glass.

INCLUDED ACCESSORIES

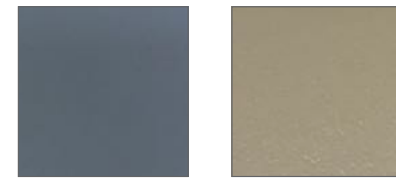


DESIGN-MEDIA-BIRCH-10PCE



OPTIONAL SURROUNDS

For Symmetry Smart fireplaces in 50", 60" & 74" models only. See page 13 for more details.



Dark Grey

Bronze

SYM 88-SMART
 Height, Width, Depth: 15-5/8 x 88-1/4 x 5-1/2
 Glass Viewing Opening: 13-1/8 x 86-3/8
 Surround Size: 16-7/8 x 90-1/4
 Shipping Weight: 139 lbs Glass Included
 Media Shown: Included Birch Log Kit



SYM 34-SMART

Height, Width, Depth: 15-5/8 x 32-3/8 x 5-1/2
 Glass Viewing Opening: 13-1/8 x 30-5/8
 Surround Size: 16-7/8 x 34-1/2
 Shipping Weight: 57 lbs Glass Included
 Media Shown: Clear Glass

SYM 42-SMART

Height, Width, Depth: 15-5/8 x 42-1/4 x 5-1/2
 Glass Viewing Opening: 13-1/8 x 40-5/8
 Surround Size: 16-7/8 x 44-1/4
 Shipping Weight: 70.50 lbs Glass Included
 Media Shown: Included Birch Log Kit



SYM 50-SMART

Height, Width, Depth: 15-5/8 x 50-1/4 x 5-1/2
 Glass Viewing Opening: 13-1/8 x 48-1/2
 Surround Size: 16-7/8 x 52-1/4
 Shipping Weight: 81.50 lbs Glass Included
 Media Shown: Included Birch Log Kit



SYM 60-SMART

Height, Width, Depth: 15-5/8 x 60-1/4 x 5-1/2
 Glass Viewing Opening: 13-1/8 x 58-3/8
 Surround Size: 16-7/8 x 62-1/4
 Shipping Weight: 95 lbs Glass Included
 Media Shown: Included Birch Log Kit



SYM 74-SMART

Height, Width, Depth: 15-5/8 x 74-1/4 x 5-1/2
 Glass Viewing Opening: 13-1/8 x 72-3/8
 Surround Size: 16-7/8 x 76-1/4
 Shipping Weight: 115 lbs Glass Included
 Media Shown: Clear Glass



SYM 100-SMART

Height, Width, Depth: 15-5/8 x 100-1/4 x 5-1/2
 Glass Viewing Opening: 13-1/8 x 98-3/8
 Surround Size: 16-7/8 x 102-1/4
 Shipping Weight: 157 lbs Glass Included
 Media Shown: Clear Glass

SYMMETRY SMART XT

There is more fire viewing area than ever before with Symmetry Smart XT, it boasts the tallest height yet. With edge to edge viewing and no unsightly heat vents this series provides an artistic element above and beyond the basic functions of fire display and heat. The result is clean, contemporary and innovative. Also featuring WiFi functionality that offers modern capabilities for a modern fireplace. Presented in red, yellow and orange flames, the presentation does not disappoint. Symmetry XT-Smart 74", 88 and 100" all have the option of being hooked up to 240 volts, which increases the heat to 240V, 3000 watts and 10,230 volts

KEY FEATURES

- Glass viewing area is 18" tall with no unsightly venting visible
- Two flame style patterns - standard and more traditional - you choose!
- Choose from combinations of yellow, orange and red colored flames.
- Flame operates with or without heat, perfect for zone heating
- Choose from 11 colors of ambient canopy light to illuminate decorative media from above
- Touch pad for convenient control of features with temperature display.
- WiFi compatible to connect and control the fireplace from your smartphone with the use of our app. Available on the Google Play Store and the Apple App Store
- Approved for Outdoor Installations*
- Most quiet and reliable components in the industry
- Patented thermostatic remote comes included
- Three flame speed motor
- Programmable timer & thermostat allows you to decide the temperature of the room. Set your fireplace to turn on before you arrive home or have it automatically turn on when the weather is cold



IDEAL APPLICATIONS

- Residential spaces
- Commercial spaces
- Restaurants
- New construction or renovations
- Outdoor use; refer to installation manual

TECHNICAL SPECS

Volts	120
Amps	13
Watts	1465 max
Heater On	1465 watts high, 732 watts low
Heater Off	60 watts Max
Rotor Motor	1 at 2.9 watts
BTU	5000 Max

Hidden venting and no grills.
The heater is located at the top of the unit allowing heat to cascade down in front of the glass.

INCLUDED ACCESSORIES

See pages 16 and 17 for more details.



YOUR CHOICE:

DESIGN-MEDIA-DRIFT-15PCE

Now includes an additional 4 mini logs (Not Shown)



DESIGN-MEDIA-RUSTIC-14PCE



ICE MEDIA



FI109-Diamond

ADDITIONAL LOG SET

The NEW Design Media Birch 12 piece log set expands the Design Media Birch 15 piece log set, if required, and is available for purchase.

DESIGN-MEDIA-BIRCH-12PCE



DESIGN-MEDIA-BIRCH-15PCE



DESIGN-MEDIA-SPLIT-LOG-16PCE



NEW

NEW



SYM 50 XT-SMART
Height, Width, Depth: 20-1/8 x 50-1/4 x 11-3/4
Glass Viewing Opening: 17-5/8 x 48-3/8
Surround Size: 21-3/8 x 52-1/4
Shipping Weight: 110 lbs Glass Included
Media Shown: Rustic Log Kit



SYM 60 XT-SMART
Height, Width, Depth: 20-1/8 x 60-1/4 x 11-3/4
Glass Viewing Opening: 17-5/8 x 58-3/8
Surround Size: 21-3/8 x 62-1/4
Shipping Weight: 129.50 lbs Glass Included
Media Shown: Birch Log Kit

**Manufacturer guidelines regarding outdoor installation must be followed. Please refer to the owner's manual for additional information*



SYM 88 XT-SMART
Height, Width, Depth: 20-1/8 x 88-1/4 x 11-3/4
Glass Viewing Opening: 17-5/8 x 86-3/8
Surround Size: 21-3/8 x 90-1/4
Shipping Weight: 185.50 lbs Glass Included
Media Shown: Rustic Log Kit



SYM 100 XT-SMART
Height, Width, Depth: 20-1/8 x 100-1/4 x 11-3/4
Glass Viewing Opening: 17-5/8 x 98-3/8
Surround Size: 21-3/8 x 102-1/4
Shipping Weight: 207.50 lbs Glass Included
Media Shown: ICE Media



SYM 74 XT-SMART
Height, Width, Depth: 20-1/8 x 74-1/4 x 11-3/4
Glass Viewing Opening: 17-5/8 x 72-3/8
Surround Size: 21-3/8 x 76-1/4
Shipping Weight: 159 lbs Glass Included
Media Shown: Drift Wood Kit



SYM 34 XT-SMART
Height, Width, Depth: 20-1/8 x 32-3/8 x 11-3/4
Glass Viewing Opening: 17-5/8 x 30-5/8
Surround Size: 21-3/8 x 34-1/2
Shipping Weight: 77 lbs Glass Included
Media Shown: ICE Media



SYM 42 XT-SMART
Height, Width, Depth: 20-1/8 x 42-1/4 x 11-3/4
Glass Viewing Opening: 17-5/8 x 40-3/8
Surround Size: 21-3/8 x 44-1/4
Shipping Weight: 95 lbs Glass Included
Media Shown: Drift Wood Kit

SYMMETRY BESPOKE SMART

SYMMETRY BESPOKE SMART IS THE WAY OF THE FUTURE!

Among the things that make our lives beautiful, fireplaces occupy an important position. Our Symmetry Bespoke Smart is more than just an ordinary fireplace, it is a well designed fireplace, unique as it combines classic form with a modern interpretation. With many customizations, all available on the app or remote, flame speed, flame colors, ember bed colors, brightness. Set up the temperature you want the room to be and the heat will turn off once the temperature has been reached. Symmetry Bespoke transforms your space into one of comfort and luxury!

KEY FEATURES

- 5 Year Warranty
- Fire & Sound – Two (2) quality audio speakers deliver a fire crackling sound. The audio is an ON/OFF feature that can be controlled through the WiFi app
- WiFi compatible to connect and control the fireplace from your smartphone with the use of our app. Available on the Google Play Store and the Apple App Store
- Bluetooth Connectivity – Featuring a fireplace with high quality audio from Bluetooth speakers. Simply pair your phone with the fireplace and press play on your smartphone
- Programmable timer & thermostat allows you to decide the temperature of the room. Set the fireplace to turn on before you arrive home or have it automatically turn on when the weather is cold.
- Smart Room Temperature Control - 59°F - 82°F or 15°C - 28°
- 1465W – 5000 BTU, heats up to 500 Sq. Ft.
- 50000 hours lifetime LED light source
- Approved for Outdoor Installations*
- Designed with front flow heating and hidden venting so that the unit can be recessed or semi flush mounted
- A clear reduced trim kit allows for a large viewing area with true lifelike flames that cannot be rived
- Adjustable flame brightness and speed that can be turned on separately.
- Adjustable ember bed colors that allow for the possibility of auto mixing thousand of colors
- Most quiet and reliable components in the industry
- Patented thermostatic remote comes included
- Masonary finish to trim option

- Residential spaces
- Commercial spaces
- Restaurants
- New construction or renovations
- Outdoor use; refer to installation manual

TECHNICAL SPECS

Volts	120
Amps	12.5 A
Watts	1465 max
Heater On	1465 watts high, 732 watts low
Heater Off	21 Watts - SYM 50 Bespoke 31 Watts - SYM 60 Bespoke 36 Watts - SYM 74 Bespoke
Rotor Motor	1 at 2.9 Watts
BTU	5000 Max

Hidden venting and no grills. The heater is located at the top of the unit allowing heat to cascade down in front of the glass.



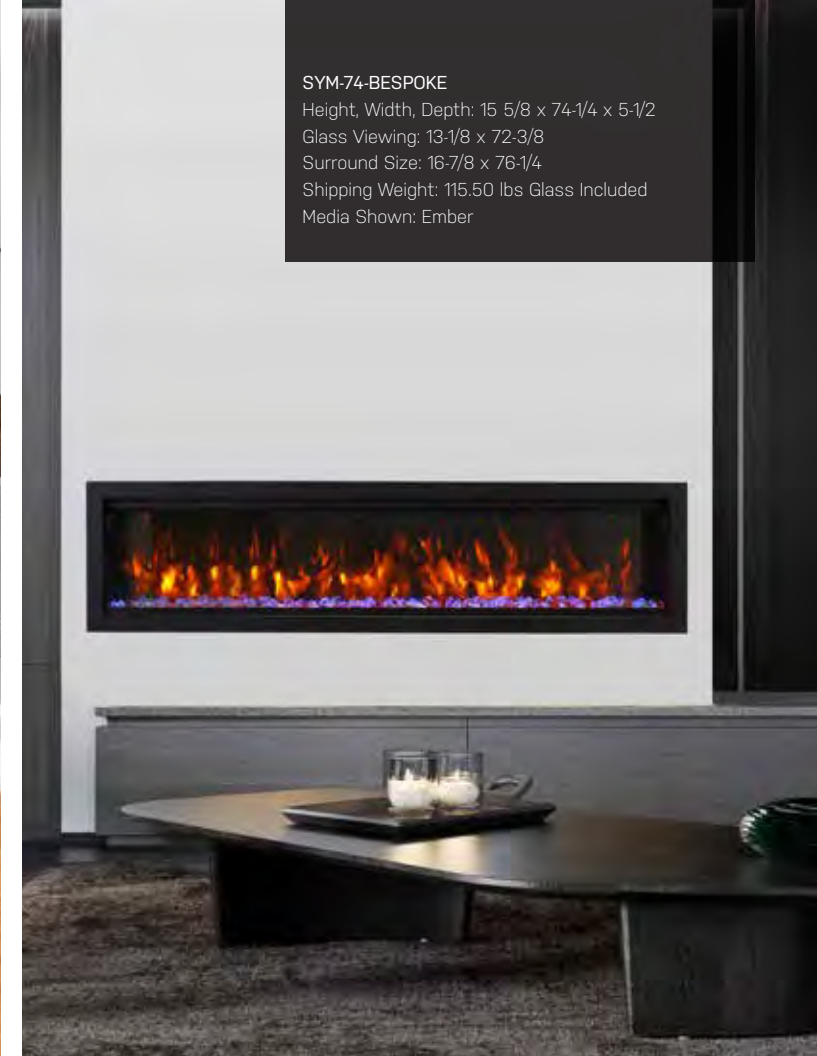
SYM-50-BESPOKE

Height, Width, Depth: 15-5/8 x 50-1/4 x 5-1/2
Glass Viewing Opening: 13-1/8 x 48-1/2
Surround Size: 16-7/8 x 52-1/4
Shipping Weight: 82.50 lbs Glass Included
Media Shown: Drift Log Set



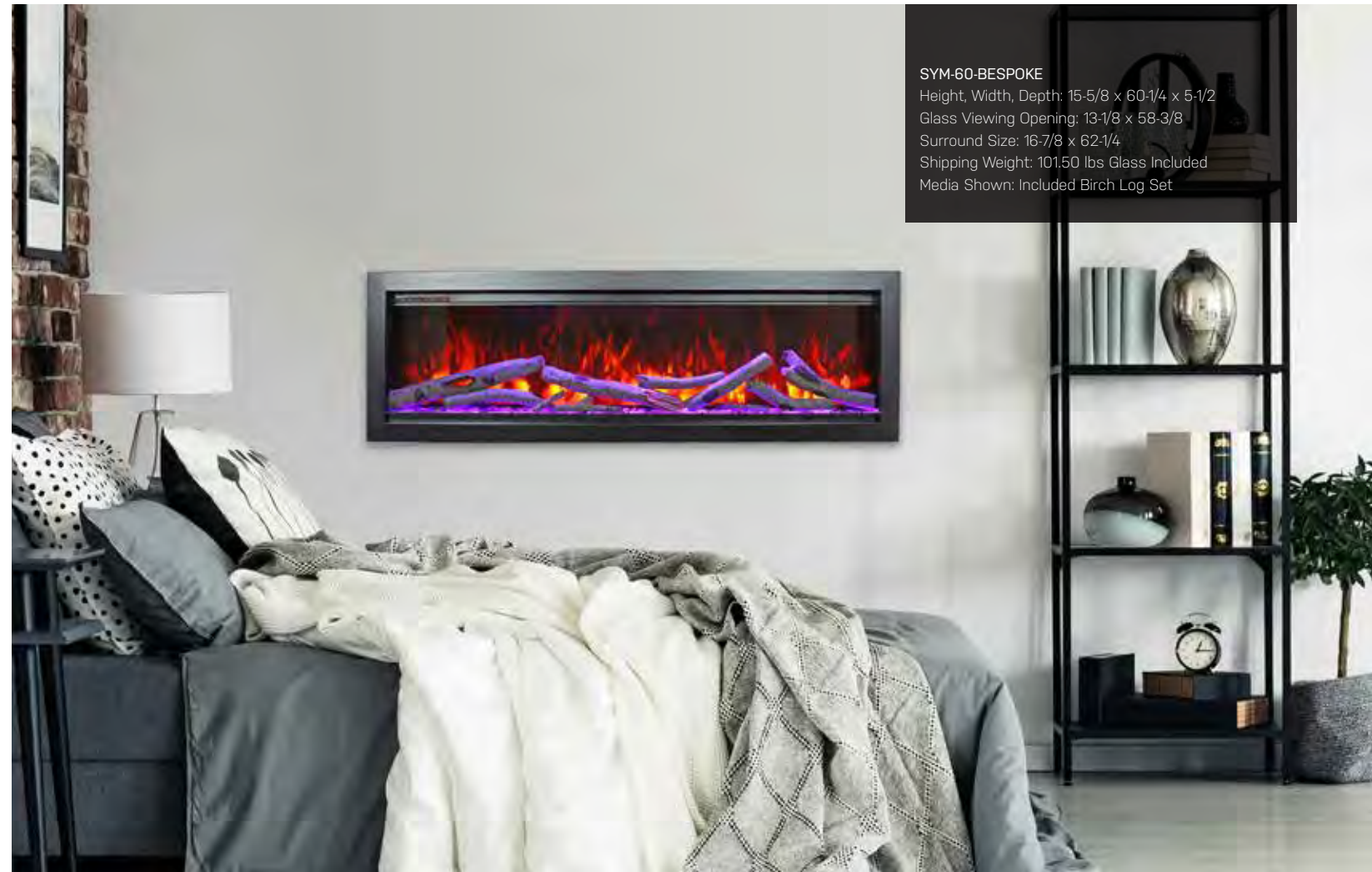
SYM-74-BESPOKE

Height, Width, Depth: 15 5/8 x 74-1/4 x 5-1/2
Glass Viewing: 13-1/8 x 72-3/8
Surround Size: 16-7/8 x 76-1/4
Shipping Weight: 115.50 lbs Glass Included
Media Shown: Ember



SYM-60-BESPOKE

Height, Width, Depth: 15-5/8 x 60-1/4 x 5-1/2
Glass Viewing Opening: 13-1/8 x 58-3/8
Surround Size: 16-7/8 x 62-1/4
Shipping Weight: 101.50 lbs Glass Included
Media Shown: Included Birch Log Set



INCLUDED ACCESSORIES

See pages 14 and 15 for flame colors and other details.

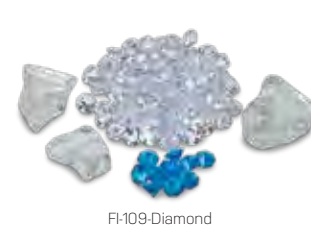


AND CHOICE OF ONE MEDIA KIT:

DESIGN-MEDIA-BIRCH-10PCE



ICE MEDIA



EMBER

Clear, Suntea, Harvest Moon



*Manufacturer guidelines regarding outdoor installation must be followed. Please refer to the owner's manual for additional information

SYMMETRY XT BESPOKE SMART

The Symmetry Xtra Tall Bespoke Smart is grandly proportioned to fit in great rooms and commercial settings. It's the size and height of this electric fireplace that started it all, revolutionizing the electric fireplace industry. Delivering tall, full flames, it commands presence in any room and can be customized to your taste – from contemporary to traditional, the media log set selection is yours.

Unencumbered by unsightly venting, the Symmetry Xtra Tall Bespoke Smart features a truly clean face display. Standard unit sizing means hassle free installation at any stage, inside or outside. Symmetry Xtra Tall Bespoke Smart is the perfect blend of versatility, style and function.

KEY FEATURES

- 5 Year Warranty
- Fire & Sound – Two (2) quality audio speakers deliver a fire crackling sound. The audio is an ON/OFF feature that can be controlled through the WiFi app.
- WiFi compatible to connect and control the fireplace from your smartphone with the use of our app. Available on the Google play store and the Apple App Store.
- Bluetooth Connectivity – Featuring a fireplace with high quality audio from Bluetooth speakers. Simply pair your phone with the fireplace and press play on your smartphone.
- Programmable timer & thermostat allows you to decide the temperature of the room. Set the fireplace to turn on before you arrive home or have it automatically turn on when the weather is cold.
- Smart Room Temperature Control - 59°F - 82°F or 15°C - 28°C
- 1465W 5000 BTU, heats up to 500 Sq. Ft. May also be wired to 240 volts to increase the BTU output to 10,230, heats up to 900 Sq. Ft.
- 50000 hours lifetime LED light source
- Approved for Outdoor Installations*
- Designed with front flow heating and hidden venting so that the unit can be recessed or semi flush mounted.
- A clear reduced trim kit allows for a large viewing area with true lifelike flames that can not be rivaled.
- Adjustable flame brightness and speed that can be turned on separately.
- Adjustable ember bed colors that allow for the possibility of auto mixing thousands of colors
- Most quiet and reliable components in the industry
- Patented thermostatic remote comes included
- Masonary finish to trim option

IDEAL APPLICATIONS

- Residential spaces
- Commercial spaces
- Restaurants
- New construction or renovations
- Outdoor use; refer to installation manual

TECHNICAL SPECS

Volts	120V OR 240V
Amps	12.5
Watts	1465 or 3000W max
Heater On	1465 Watts high, 732 Watts low
Heater Off	42.7 Watts – SYM 50 XT Bespoke 45.2 Watts – SYM 60 XT Bespoke 60.4 Watts – SYM 74 XT Bespoke
Rotor Motor	1 at 2.9 Watts
BTU	5000 BTU on 120 Volts 10,230 BTU on 240 Volts

Heats up to 500 Sq Feet on 120 Volts
Heats up to 800 Sq Feet on 220 Volts

Hidden venting and no grills. The heater is located at the top of the unit allowing heat to cascade down in front of the glass.

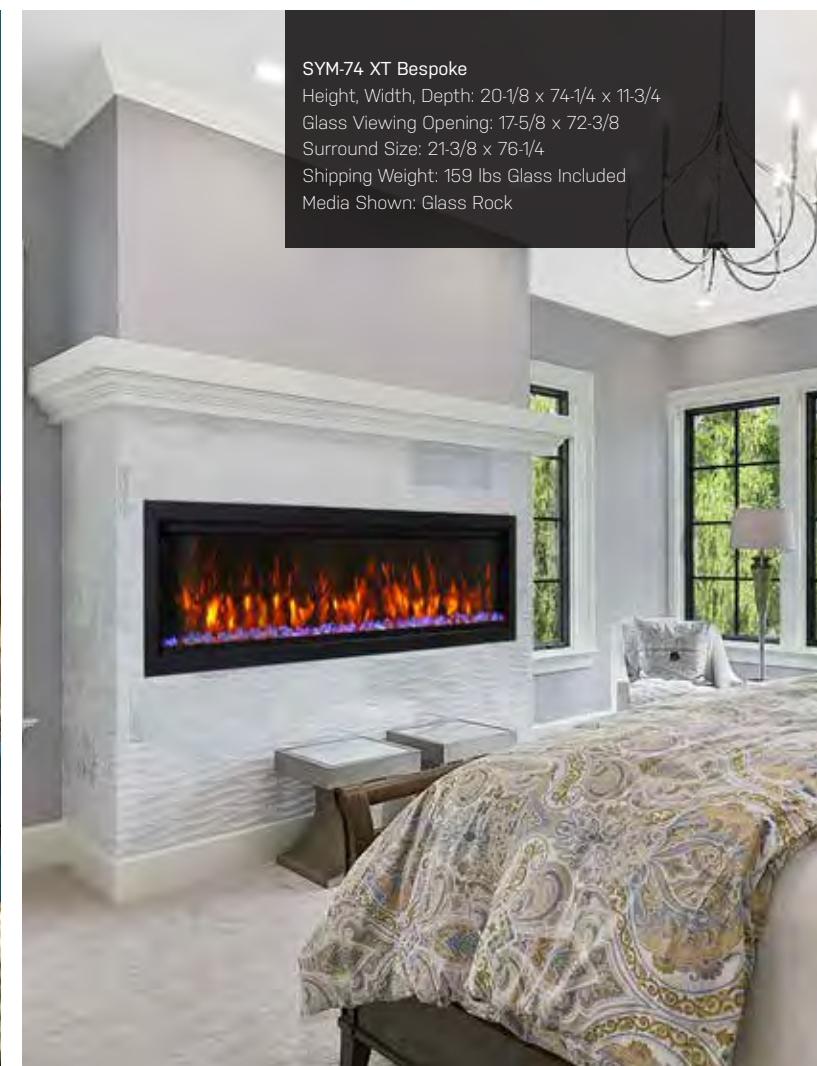
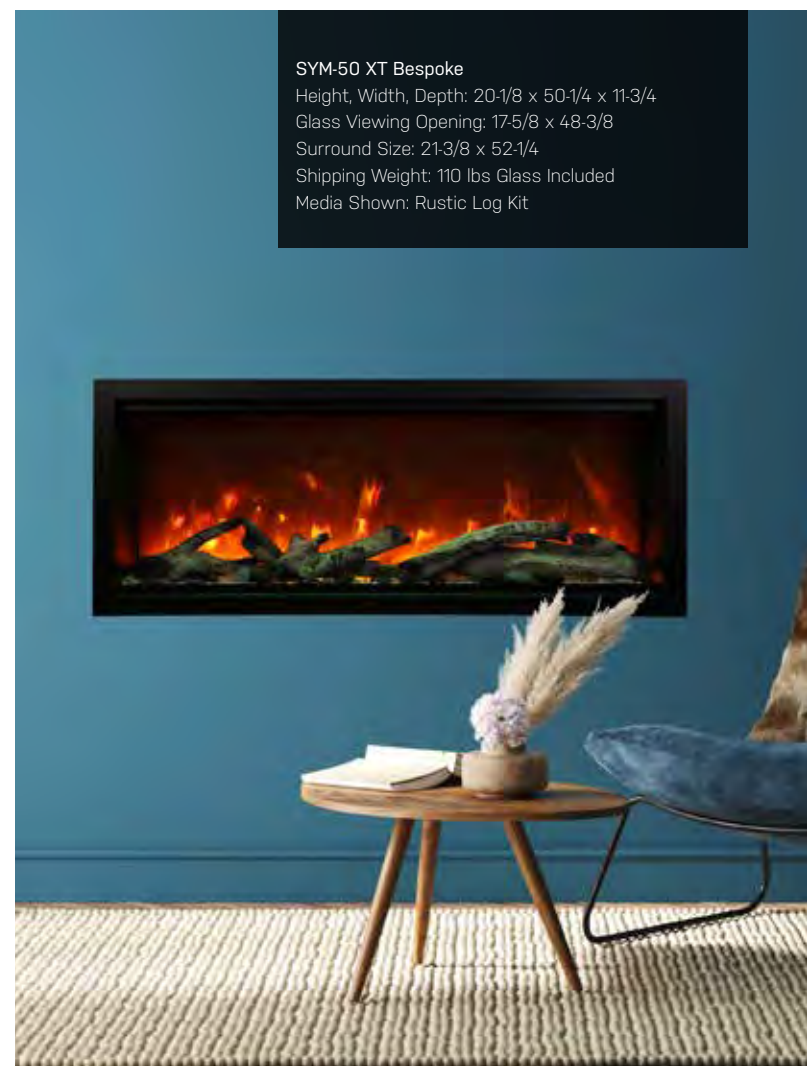


SYM-60 XT Bespoke
Height, Width, Depth: 20-1/8 x 60-1/4 x 11-3/4
Glass Viewing Opening: 17-5/8 x 58-3/8
Surround Size: 21-3/8 x 62-1/4
Shipping Weight: 129.50 lbs Glass Included
Media Shown: Birch Log Kit



SYM-50 XT Bespoke
Height, Width, Depth: 20-1/8 x 50-1/4 x 11-3/4
Glass Viewing Opening: 17-5/8 x 48-3/8
Surround Size: 21-3/8 x 52-1/4
Shipping Weight: 110 lbs Glass Included
Media Shown: Rustic Log Kit

SYM-74 XT Bespoke
Height, Width, Depth: 20-1/8 x 74-1/4 x 11-3/4
Glass Viewing Opening: 17-5/8 x 72-3/8
Surround Size: 21-3/8 x 76-1/4
Shipping Weight: 159 lbs Glass Included
Media Shown: Glass Rock



INCLUDED ACCESSORIES

Models come with a choice of a Design Media kit - Driftwood, Birch or Rustic or ICE media kit



ADDITIONAL LOG SET

The NEW Design Media Birch 12 piece log set expands the Design Media Birch 15 piece log set, if required, and is available for purchase.

DESIGN-MEDIA-BIRCH-12PCE



NEW

YOUR CHOICE:

DESIGN-MEDIA-DRIFT-15PCE
Now includes an additional 4 mini logs (Not Shown)



DESIGN-MEDIA-RUSTIC-14PCE



DESIGN-MEDIA-BIRCH-15PCE



DESIGN-MEDIA-SPLIT-LOG-16PCE



NEW

ICE MEDIA



FI-109-Diamond

**Manufacturer guidelines regarding outdoor installation must be followed. Please refer to the owner's manual for additional information*

SYMMETRY FEATURES

TWO FLAME STYLE PATTERNS

The SYMMETRY fireplace arrives from the factory with a NEW realistic style flame pattern. Enjoy our flame presentation in a new style that mimics real fire like never before. If you prefer Amantii's traditional diffused flame appearance, simply remove the included stencil.



Birch Logs *with* real flame stencil
Yellow flame with a little Orange
Ambient Canopy Lighting: On



Birch Logs *without* real flame stencil
Yellow flame with a little Orange
Ambient Canopy Lighting: On



Ember Rocks *with* Flame Mold
Yellow flame
Ambient Canopy Lighting: On



Ember Media *without* real flame stencil
Orange flame
Ambient Canopy Lighting: On

AMBIENT CANOPY LIGHTING

Add more dimension and excitement to your SYMMETRY electric fireplace by illuminating Amantii's decorative media kits (or your own) from above. The ambient canopy lighting is located in the upper part of the fireplace and with the click of a button, choose from 11 colors of light.



Lighting On



Lighting Off

CLEAN FACE NO UNSIGHTLY VENTING

Unlike models made by other manufacturers, SYMMETRY models are unencumbered by unsightly venting. Venting and grills take away from the aesthetics of a fireplace and the SYMMETRY series have some of the biggest glass viewing areas in the industry. You'll see more of what is important - a beautiful, warm and comforting flame display.



TOUCH PAD

Convenient touch pad with temperature indicator display.



HASSLE FREE INSTALLATION

The SYMMETRY has been made with standardized unit sizing. This means that the opening for the fireplace can be made at any stage of a build, the appliance can be easily installed and finished with the included surround at the end of a project. The surround beautifully completes the fireplace without the need for finicky or costly finishing.

FIRE & ICE FLAME KIT FIRE & ICE TRAY KIT

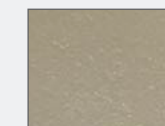
This kit provides the necessary components to enable the FIRE & ICE presentation to be included with the Amantii Smart Fireplace. The Smart models use the latest cutting edge technology and innovation to provide instant heat, realistic flame and adaptive lighting. Fire and Ice Flame and Tray Kits are available for purchase.



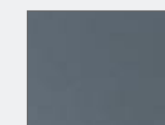
SYMMETRY SMART OPTIONS

OPTIONAL SURROUNDS

Add a designer touch to your space with a beautifully finished Dark Grey or Bronze colored surround. These decorative surrounds will compliment Symmetry Smart fireplace in 50", 60" & 74" models only. The surrounds will arrive in a separate package.



Bronze



Dark Grey

FOR SEMI-FLUSH MOUNT INSTALLATION

For rooms where space may be at a premium, Symmetry Smart models can also be partially recessed within a 2 x 4 wall. The unit will sit 2" outside of the wall with 4" of the unit mounted inside.

- This install option requires the Semi-Flush Mount Surround (SYM-XS) to finish the look of the fireplace.
- The Semi-Flush Mount Surround has a black finish and has a depth of 2 1/4"
- The Semi-Flush Mount Surround must be purchased separately. Ships in a separate box.
- This application is only applicable to the Symmetry Smart. XT models must be fully recessed.

SYMMETRY BESPOKE FEATURES

TWO FLAME STYLE PATTERNS

The SYMMETRY fireplace arrives from the factory with a NEW realistic style flame pattern. Enjoy our FIRE & ICE® flame presentation in a new style that mimics real fire like never before. If you prefer Amantii's traditional diffused flame appearance, simply remove the included stencil.



Birch Log *with* real flame stencil
Orange flame



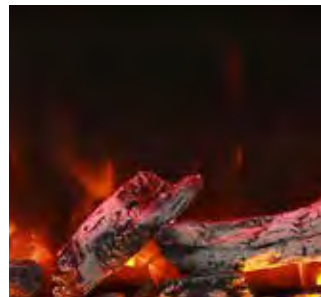
Ember Media *without* real flame stencil
Orange flame



Ember Media *with* real flame stencil
Red flame



Birch Log *without* real flame stencil
Orange flame



Rustic Log *with* real flame stencil
Yellow flame



Glass Chunks *without* real flame stencil
Yellow flame



Ember Rocks *with* Flame Mold
Yellow flame
Ambient Canopy Lighting: On



Ember Rocks *without* real flame stencil
Yellow flame
Ambient Canopy Lighting: On

AMBIENT CANOPY LIGHTING

Add more dimension and excitement to your SYMMETRY electric fireplace by illuminating Amantii's decorative media kits (or your own) from above. The ambient canopy lighting is located in the upper part of the fireplace and with the click of a button, choose from 11 colors of light.



Lighting On



Lighting Off

TOUCH PAD

Convenient touch pad with temperature indicator display.



HASSLE FREE INSTALLATION

The SYMMETRY has been made with standardized unit sizing. This means that the opening for the fireplace can be made at any stage of a build, the appliance can be easily installed and finished with the included surround at the end of a project. The surround beautifully completes the fireplace without the need for finicky or costly finishing.



FIRE & ICE FLAME KIT FIRE & ICE TRAY KIT

This kit provides the necessary components to enable the FIRE & ICE presentation to be included with the Amantii Smart Fireplace. Symmetry Smart uses the latest cutting edge technology and innovation to provide instant heat, realistic flame and adaptive lighting.



CLEAN FACE NO UNSIGHTLY VENTING

Unlike models made by other manufacturers, SYMMETRY models are unencumbered by unsightly venting. Venting and grills take away from the aesthetics of a fireplace and the SYMMETRY series have some of the biggest glass viewing areas in the industry. You'll see more of what is important - a beautiful, warm and comforting flame display.



SYMMETRY XT FEATURES

TWO FLAME STYLE PATTERNS

The SYMMETRY fireplace arrives from the factory with a NEW realistic style flame pattern. Enjoy our flame presentation in a new style that mimics real fire like never before. If you prefer Amantii's traditional diffused flame appearance, simply remove the included stencil.



Birch Logs *with* real flame stencil
Yellow flame with a little Orange
Ambient Canopy Lighting: On



Birch Logs *without* real flame stencil
Yellow flame with a little Orange
Ambient Canopy Lighting: On



Rustic Logs *with* real flame stencil
All Yellow
Ambient Canopy Lighting: On



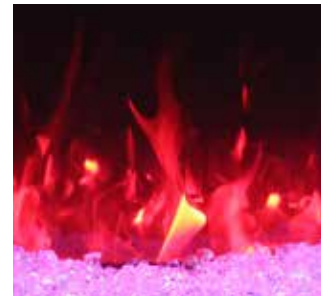
Rustic Logs *without* real flame stencil
All Yellow
Ambient Canopy Lighting: On



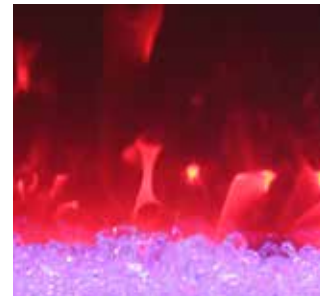
Drift Logs *with* real flame stencil
All Yellow All Orange flame
Ambient Canopy Lighting: On



Drift Logs *without* real flame stencil
All Yellow All Orange flame
Ambient Canopy Lighting: On



Glass Rocks *with* Flame Mold
Orange flame with a little Red
Ambient Canopy Lighting: On



Glass Rocks *without* real flame stencil
Orange flame with a little Red
Ambient Canopy Lighting: Off



Ember Rocks *with* Flame Mold
Yellow flame
Ambient Canopy Lighting: On



Ember Rocks *without* real flame stencil
Yellow flame
Ambient Canopy Lighting: On

TOUCH PAD

Convenient touch pad with temperature indicator display.



AMBIENT CANOPY LIGHTING

Add more dimension and excitement to your SYMMETRY electric fireplace by illuminating Amantii's decorative media kits (or your own) from above. The ambient canopy lighting is located in the upper part of the fireplace and with the click of a button, choose from 11 colors of light.



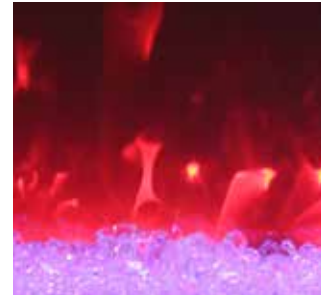
Lighting On



Lighting Off



Lighting On



Lighting Off

TALL VIEWING AREA



17-5/8"

SYM-50XT



13-1/8"

SYM-50



10-3/4"

SYM SLIM 50

EXTRA DEEP TRAY

At 12" in depth the extra deep tray accommodates more decorative media than any other unit on the market.

DUAL HEATERS ON SELECT XT MODELS

The SYM-60 XT, SYM-74 XT, SYM-88 XT and SYM-100 XT have dual heaters built-in, for double the heat output.

FIRE & ICE FLAME KIT FIRE & ICE TRAY KIT

This kit provides the necessary components to enable the FIRE & ICE presentation to be included with the Amantii Smart Fireplace. Symmetry Smart uses the latest cutting edge technology and innovation to provide instant heat, realistic flame and adaptive lighting.



FIRE GLASS

Our decorative fire glass media is a beautiful addition to your fireplace. Turn your fireplace into a expressive work of art by simply adding our decorative fire glass media. Our fire glass adds a distinctly modern feel to your gas fireplace - mix colors and textures for a unique appearance.

Our decorative fire glass is tempered and will not melt or degrade, some discoloration is normal on glass that is placed directly on the flame. Always wear protective gloves when handling fire glass media.

One 5lb container of media will cover 1 square foot.



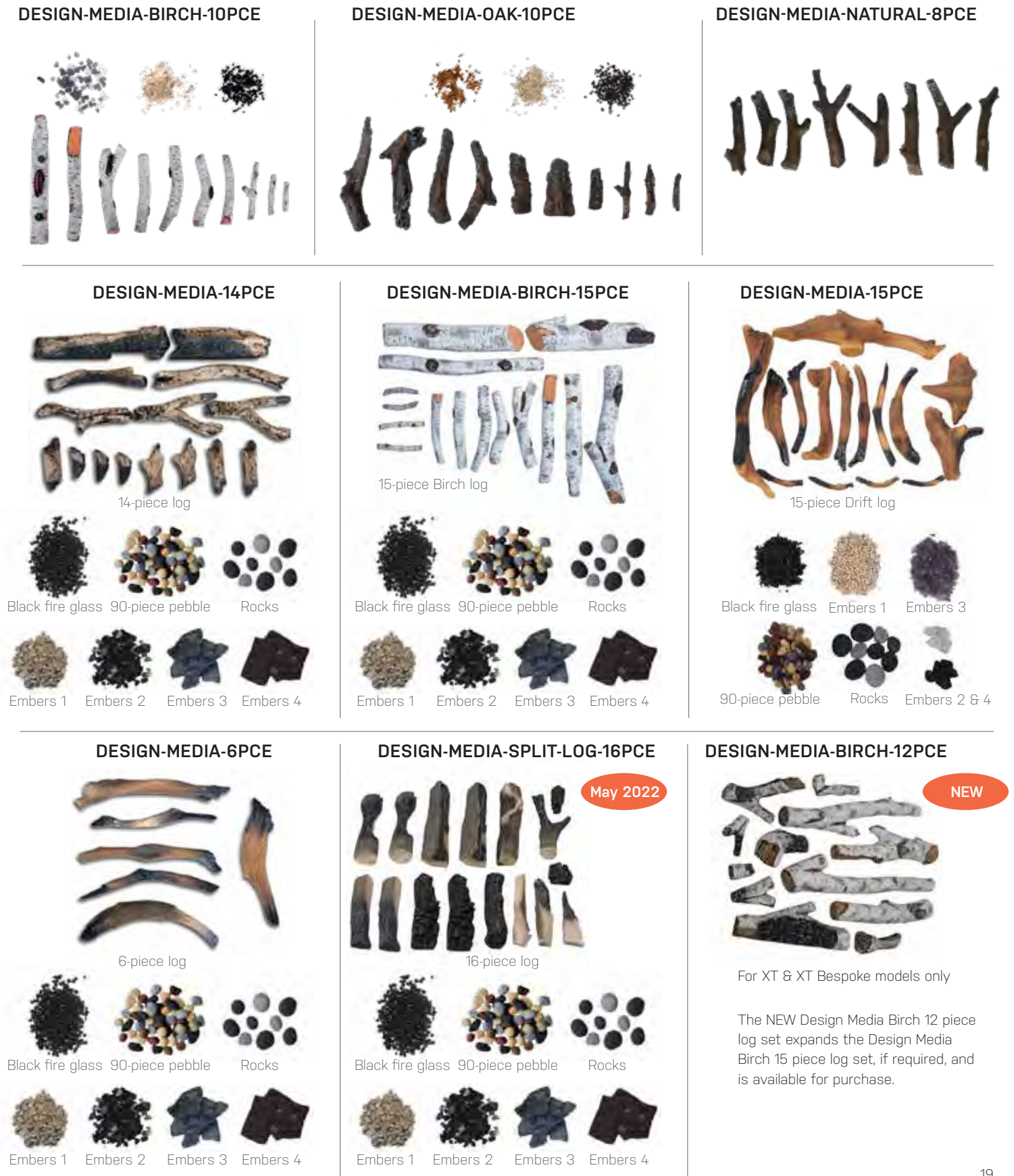
Images are not to scale, please visit your local dealer to view the actual accessories.

Variations in the color and shade are inherent in all printing processes, the actual colors may vary slightly from those shown.

Note: Log sets and Designer Media Kits will fit in all sizes of the following models - Panorama DEEP, TRU VIEW XL and CUBE ONLY. (Depending on the size of the fireplace model, some logs may not be needed.)

DESIGNER MEDIA KITS

Add incredible value with designer media kits including deluxe log sets, glass and stone media and decorative embers.



For XT & XT Bespoke models only

The NEW Design Media Birch 12 piece log set expands the Design Media Birch 15 piece log set, if required, and is available for purchase.



AM-SYM-US SEPT 2022

Distributed By:

We reserve the right to update products, specifications and dimensions are subject to change. Please refer to the product manual to verify measurements and clearance requirements. All local building codes must be followed.

Amantii

Visit our online showrooms at:
www.symmetryfireplace.com
www.amantii.com